



Panafrican Centre for Strategic Development

Excellence, Integrity, Reliability, Accountability and Flexibility are the principles on which our services are anchored.

[Organizational Profile](#)



The Organization

Panafrican Centre For Strategic Development (PCSD) was registered in 2008 as **Centre For Strategic Development** but changed its name in 2022 to reflect its expanded Africa-wide footprint. PCSD is a specialist development and management consulting company accredited with NITA as a training and management consulting firm; and with ILO as their SIYB BDS & Mentorship Partners. Headquartered in Nairobi-Kenya, PCSD has presence in Uganda, Tanzania, South Sudan, Sudan, Somaliland, Zambia and Democratic Republic of Congo (DRC). **PCSD** works with development, public

and private sector partners including the United Nations, the World Bank, the International Finance Corporation (IFC), The United Nations Development Programme (UNDP), the European Union (EU) and USAID amongst others. CSD implements an Equal Opportunities Employment Policy which values fairness and non-discrimination in terms of gender, disability, colour, creed, or ethnicity.

Our Offices

- ✓ PCSD is Headquartered in Nairobi, Kenya; with country offices in Uganda, Tanzania, South Sudan, Sudan, DR Congo, Malawi, Mozambique and Zambia.





Vision

A sustainable, developed, socially and economically empowered society.



Mission

To foster ecosystems that create and enhance resilient businesses, promote financial inclusion, and drive equitable socio-economic development in Africa



Goal

To provide a platform for sustainable socio-economic development of organizations and communities in Africa.

Our Core Values



Excellence



Integrity



Reliability

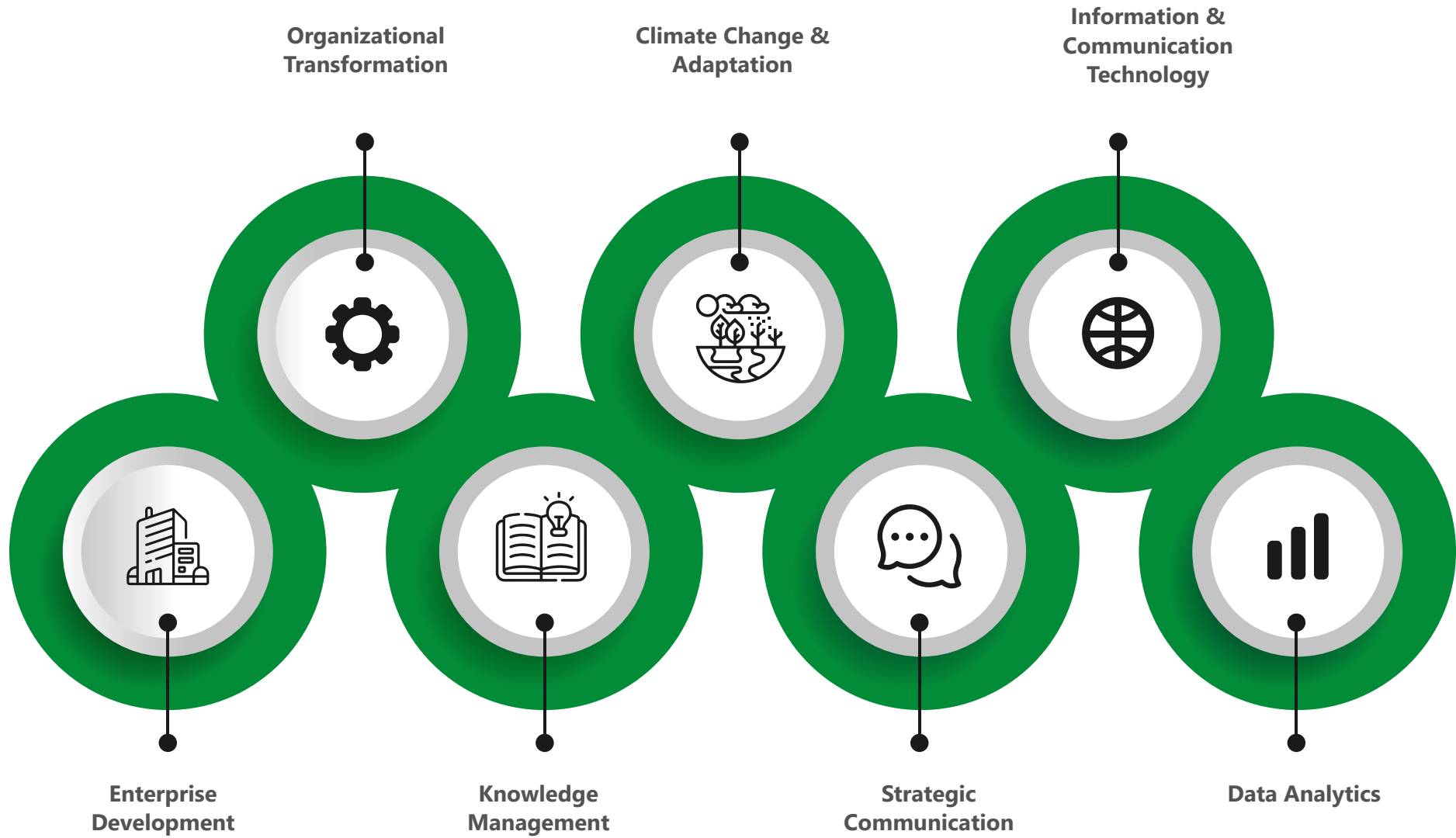


Accountability



Flexibility

Our Strategic Pillars



100+ Specialists

Certified in various specializations including governance, strategy, and project management.

200+ Consultants

Qualified Consultants, SIYB Trainers, Mentors, and Coaches across Africa.



Our Key Innovations



Drought Early Warning Color-Coded Flags

Visual communication system for drought early warning in arid and semi-arid regions.



Drought Resilience Knowledge & Learning Fair

Platform for sharing knowledge and best practices on drought resilience.



Experiential Learning for Youth and Women

Integrating practical, hands-on learning into training programs for youth.



School Climate Action Clubs

Student centred clubs that work to raise awareness about climate change and promote sustainable practices within their schools and communities.

Our Services

Enterprise Development and Entrepreneurship



Capacity Development

Comprehensive training programs for MSMEs.



Business Development Services

Support throughout the business journey.



Business Mentorship

Connecting Medium and Large Enterprises to experienced Mentors, Markets and Resources.



Socio-emotional Skills

Fostering resilience and leadership qualities.

Organizational Development



Governance & Leadership

Establishing robust governance frameworks and cultivating strong leadership teams.



Organizational Transformation

Guiding clients through complex change initiatives and operational improvements.



Business Strategy

Developing and executing winning strategies aligned with long-term goals.



Business Continuity

Preparing for and mitigating potential disruptions to ensure operational resilience.

Environment, Climate Change, Resilience and Adaptation



Environment Impact Assessment (EIA)

Evaluating potential environmental and social consequences of development projects.

Strategic Environmental Assessment (SEA)

Assessing environmental implications of policies, plans, and programs.

Environmental Audit

Monitoring and evaluating environmental performance of organizations and projects.



Strategic Communication



Communication Strategy Development & Review

Tailoring comprehensive strategies to organizational goals and target audiences.

Reputation Management

Building and maintaining strong public images for long-term success.

Crisis Communication & Management

Preparing organizations to effectively navigate unforeseen crises.

Media Relations

Developing effective strategies for engaging with journalists and media outlets.

Information and Communication Technology



ICT Assessment & Audit

Evaluating existing infrastructure and identifying improvement areas.

Business & ICT Alignment

Ensuring technology supports core business processes.

ICT Strategy Development

Aligning technology initiatives with business objectives.

ICT Leadership & Management

Empowering organizations to effectively manage IT resources.

Knowledge Management



KM Strategy

Developing comprehensive strategies tailored to organizational needs.

KM Framework & Governance

Establishing robust structures and fostering a culture of knowledge sharing.

KM Process

Designing efficient processes for knowledge creation, capture, and sharing.

KM Planning & Implementation

Providing support throughout the implementation of KM initiatives.

Data Analytics and Artificial Intelligence



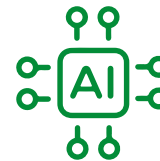
Market and Development Research

Conducting comprehensive research using advanced data analytics techniques.



Big Data & Analytics

Extracting valuable insights from large and complex datasets.



Artificial Intelligence (AI)

Developing innovative AI-powered solutions for various challenges.



Internet of Things (IoT)

Leveraging IoT technologies for real-time data collection and analysis.

Our Experience

Project Highlights: Young Africa Works Kenya Programme



Scale

Provided business development services to 4,600 SMEs across 13 counties in Kenya.

Impact

Delivered individual and group mentorship sessions, created case studies, and facilitated market linkages.

Mentorship

Recruited and trained 250 mentors certified for the ILO's SIYB Program.

Funders



Project Highlights: Kenya Youth Employment & Opportunities Project



23,000+

Youths Trained

Provided Core Business Skills training to enhance employability and entrepreneurship.

Impact

Implemented innovative experiential learning approaches for effective skills transfer.

6

Counties Covered

Implemented across Migori, Kisumu, Kakamega, Bungoma, Kisii, and Turkana.

Funders



Project Highlights: Employment & Entrepreneurship for Youth in DRC



Scale

Implemented in 12 districts across Democratic Republic of Congo.

Impact

Successfully trained and mentored 4800 youths in Core Business Skills and Entrepreneurship.

Mentorship

Enhanced employment and entrepreneurship opportunities through capacity building and training.

Funders



Project Highlights: Entrepreneurship Skills for Youth in South Sudan



Reach

Provided Life Skills and Core Business Skills Training to 1,500 Youths across three regions.

Funders



**European
Union**

Approach

Conducted baseline surveys, developed tailored training materials, and implemented follow-up evaluations.

Project Highlights: Building Resilience in ASAL Communities



Focus

Improved knowledge management and strategic communication in Turkana and Kitui Counties.

Innovation

Created strategies for leveraging local media to build community resilience.

Outcomes

Developed frameworks for strengthening County-level communications and engagement with local communities.

Funders



Project Highlights: Drought Risk Management in Turkana County



Situation Analysis

Determined modes and types of communication channels.

Innovation

Conceptualized and developed Drought Early Warning Flags.

Community Engagement

Conducted training and commissioned Drought Clubs in primary schools.

Funders



European
Union



Project Highlights:

Covid-19 Messaging and Technical Advisory for Business Continuity to County Assemblies in Kenya's 47 Counties



20M+
TV Viewership

Reached through 25 national television shows.

47
Counties Covered

Provided support to all County Assemblies in Kenya.

23.8M+
Radio Listeners

Engaged through 91 vernacular radio shows.

Funders



Why Partner With Us

Access to Expertise

We boast a team of expert consultants with a depth of knowledge that provide businesses with access to specialized skills and insights for navigating complex challenges and identifying growth opportunities.

Pan-African Reach

With a focus on East and Central African countries, we offer organizations a unique platform to grow their businesses in Africa by leveraging local knowledge and understanding of the diverse market landscapes.

Sustainable and Impactful Solutions

Our commitment to the UN SDGs and alignment with national development agendas ensures that business contribute to positive impact, enhancing brand reputation and attracting socially conscious partners.

Innovative and Data-Driven Approaches

We utilize the latest models and tools to deliver strategic solutions, providing organizations with data-driven insights and innovative approaches to improve efficiency, increase competitiveness, and achieve sustainable growth.



Value Proposition



Data-Driven Decisions



Rigorous Analysis



**Client-Centric
Solutions**



**Focus on Measurable
Outcomes**



**Evidence-Based
Recommendations**

Our Business Philosophy



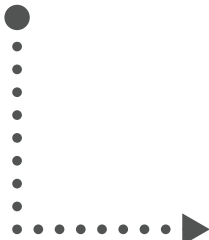
Client-Centric Approach

Prioritizing understanding of clients' unique needs and challenges.



Focus on ROI

Demonstrating clear return on investment for our clients



Sustainable Solutions

Delivering long-term value while minimizing environmental impact.



Continuous Improvement

Fostering a culture of learning and adaptation.



Competitive Advantage

Giving our clients tools that make them stand out

Our Impact



708M+
Credit Accessed
(KShs)

Facilitating financial inclusion for MSMEs.



35,115+
MSMEs Supported

Across multiple projects and countries.



5.4B+
Value Created
(KShs)

Generating economic value through MSME development.



20,521+
Jobs Created

Contributing to economic growth and employment.

Our Partners





Contact Us

Wood Avenue Court, Suite No. 8, Wood Avenue, Nairobi, Kenya

Tel: (+254) 777 411103 / (+254) 208 100300

Email: consult@csdafrica.com

Website: www.csdafrica.com